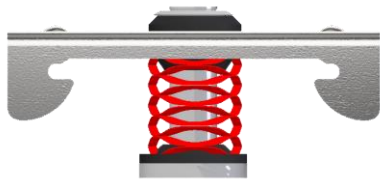




## RSIC-SI-X



The **RSIC SI-X** is designed for use with any wood framed, steel framed, or concrete (with Over Head Adapter) ceiling system where noise control is needed. The RSIC-SI-X assembly decouples and isolates the gypsum board or plywood from the structure with a low profile spring increasing the acoustical performance of the system. With an Acoustical design load range from 7 lbs to 25 lbs per isolator, the RSIC-SI-X clip can support up to two layers of 5/8" gypsum board when spaced at 16" x 48" oc. The RSIC-SI-X clip fastens directly to the framing or structure creating an air cavity between the face of the framing and the back of the gypsum board. The RSIC-SI-X stops the noise and vibrations that typically would be allowed to transfer through the structure.

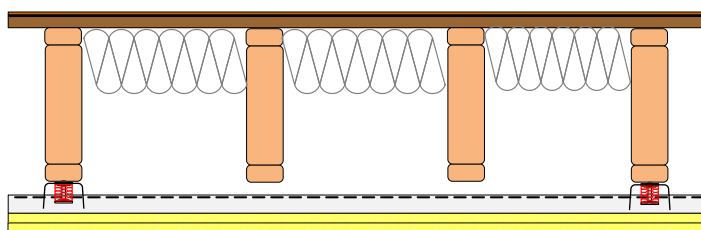
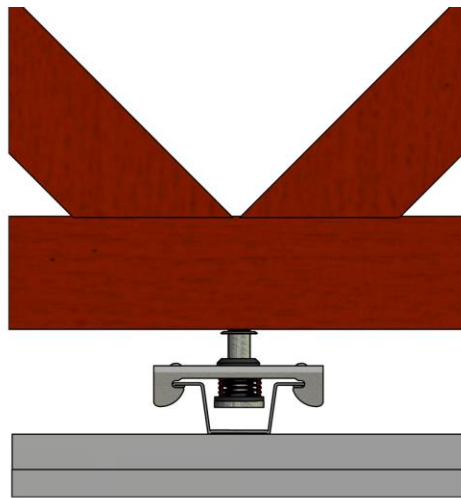
Wood
Steel
Metal Deck

Steel
Condo
Commercial

Apartment
Retail
Conference Rooms

Recording Studio
Home Theater
Commercial theater

RSIC-SI-X on Open Web Truss



RSIC-SI-X Specifications:

Acoustical design load:	7 lb to 25 lb
Total deflection	0.5"
Double deflection	YES
Adjustable	NO
Cavity min	2" nom
Cavity Max	2" nom
Adjustment limit	0"
Use on Ceilings	YES
New Construction	YES
Retro Fit	YES
Spring Isolation	Yes
Rubber Isolation	Yes
Pre-Calibrated	Yes
Pre-Assembled	Yes
Made in the USA	Yes

Made, Tested, Engineered, Designed, and Calibrated In USA