

ETL SEMKO

August 22, 2007

Louisiana-Pacific Corporation
2706 US Highway 421 North
Wilmington, NC 28401

Attention: Mr. Ping Cheng, P.E.
Research Engineer

Dear Sir:

**Re: Evaluation No. 3131125COQ-001
Use of RSIC-1 Clip in One-Hour Rated Louisiana-Pacific Floor/Ceiling Assemblies**

The PAC International Inc. Type RSIC-1 is a resilient furring channel mounting clip system intended to improve STC ratings. It is listed by UL for use in the following wood-framed floor/ceiling assemblies:

Design Nos.: L502, L505, L510-L514, L518, L521, L523, L528, L532, L534, L542,
L546, L547, L548, L550, L562, L569, L570, L573, L576, L579, L582,
and L589

The L-P floor/ceiling assemblies listed by Intertek are similar to the equivalent UL listed designs but use L-P structural members. The use of the PAC International Inc. RSIC-1 clip system will not reduce the fire resistance rating of the Louisiana-Pacific 45-minute and 60-minute floor/ceiling assemblies.

The RSIC-1 clip may be used in the LP/FCA 45-01 and LP/FCA 60-01 Intertek listed floor/ceiling assemblies.

Yours truly,

INTER K TESTING SERVICES NA LTD.

MVG/bjm

C:\Documents and Settings\bmill\My Documents\ITS-DATA\490-WP\RPT\2007 - 491 Rpts\L-P 3131125 aug-07 doc

This report is for the exclusive use of Intertek's Client and is provided pursuant to the agreement between Intertek and its Client. Intertek's responsibility and liability are limited to the terms and conditions of the agreement. Intertek assumes no liability to any party, other than to the Client in accordance with the agreement, for any loss, expense or damage occasioned by the use of this report. Only the Client is authorized to permit copying or distribution of this report and then only in its entirety. Any use of the Intertek name or one of its marks for the sale or advertisement of the tested material, product or service must first be approved in writing by Intertek. The observations and test results in this report are relevant only to the sample tested. This report by itself does not imply that the material, product, or service is or has ever been under an Intertek certification program.

Intertek Testing Services NA Ltd.

1500 Brigantine Drive, Coquitlam, BC V3K 7C1

Telephone: 604-520-3321 Fax: 604-524-9186 Web: www.intertek-etlsemko.com

ROOF/CEILING, FLOOR/CEILING, BEAM & COLUMN ASSEMBLIES

LOUISIANA-PACIFIC CORP. - Wilmington, NC USA

▶ DESIGN NO. LP/FCA 45-01

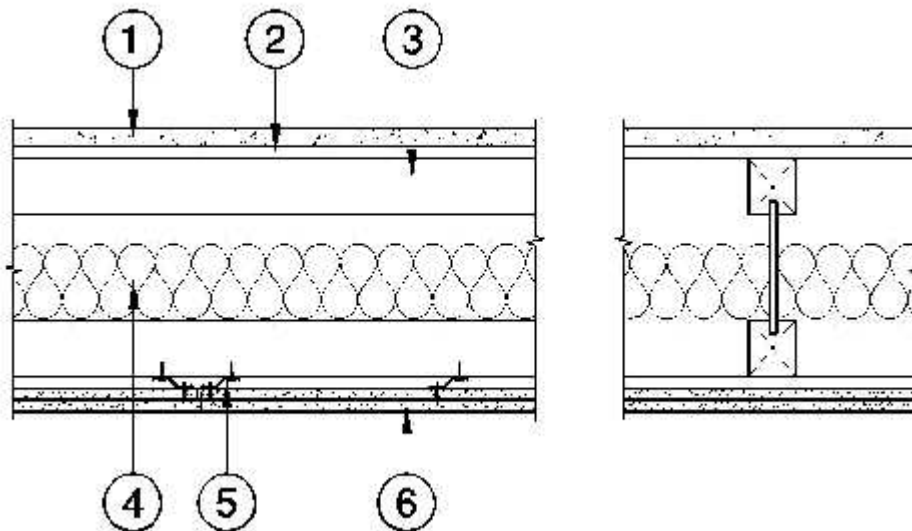
▼ DESIGN NO. LP/FCA 60-01

DESIGN NO. LP/FCA 60-01

FLOOR/CEILING ASSEMBLY; ASSEMBLY RATING - 60 MINUTES

STC RATING WITHOUT TOPPING - 50

IIC WITHOUT TOPPING OR FLOOR COVERING - 45



1.	Topping (Optional): Lightweight concrete or proprietary topping.
2.	Sub-Flooring : Minimum 5/8" tongue and groove plywood or OSB, installed perpendicular to joists, with end joints staggered, and fastened in accordance with Code requirements.
3.	Structural Members : Louisiana-Pacific LPI 20 or higher number series joists, or LPI 150 or higher numbered series joists, having a minimum depth of 9-1/2", installed at 24" oc maximum.
4.	Insulation (Optional): Maximum 4-1/2" thickness fiberglass batt insulation, located above joist flanges and supported by stay wires 12" apart.
5.	Resilient Channels : Nominal 1/2" offset, 24 gauge galvanized steel channels installed perpendicular to joists and spaced 24" oc maximum.
6.	Gypsum Board : Two layer of 1/2" Type X wallboard installed perpendicular to joists or furring channels. Base layer gypsum wallboard installed with end joints located on joists or channels and end joints staggered minimum 16". Base layer fastened to joists or channels with 1-5/8" screws, located 12" oc Face layer end and edge joints to be staggered from those of base layer. Face layer end joints to be located on joists or channels, and fastened with 2-1/4" Type S screws located 12" oc Face layer board joints to be taped and filled, and screw heads to be filled with joint compound.

- ▶ **DESIGN NO. LP/FCA 60-02**
 - ▶ **DESIGN NO. LP/FCA 90-01**
 - ▶ **DESIGN NO. LP/FCA 120-01**
 - ▶ **DESIGN NO. LP/RCA 60-01**
 - ▶ **Evaluated to the following...**
-