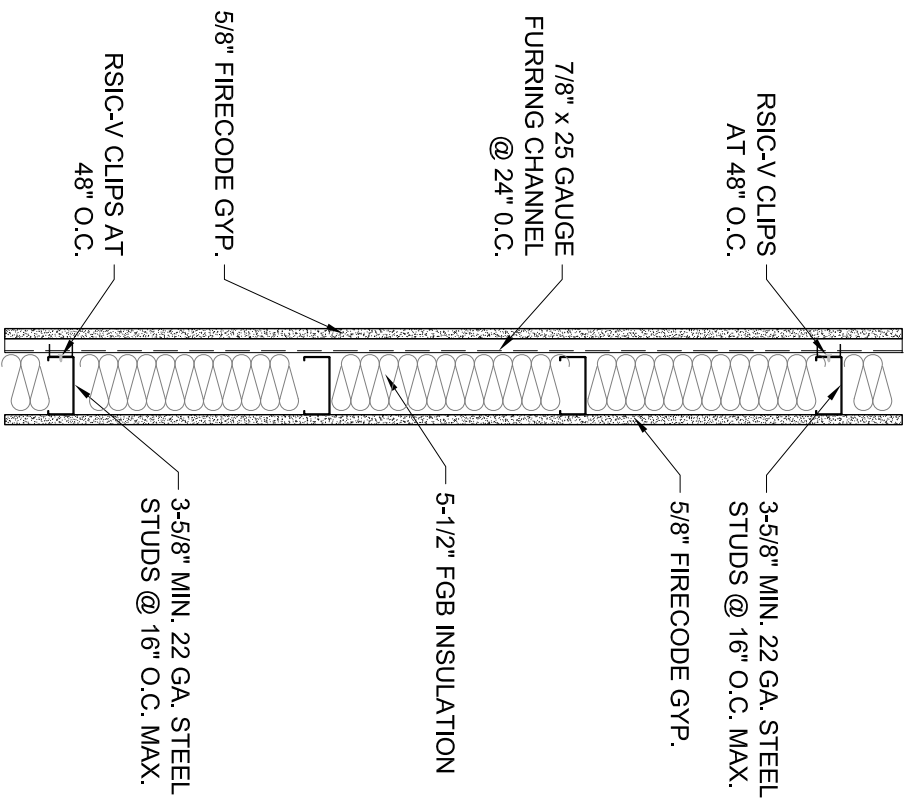
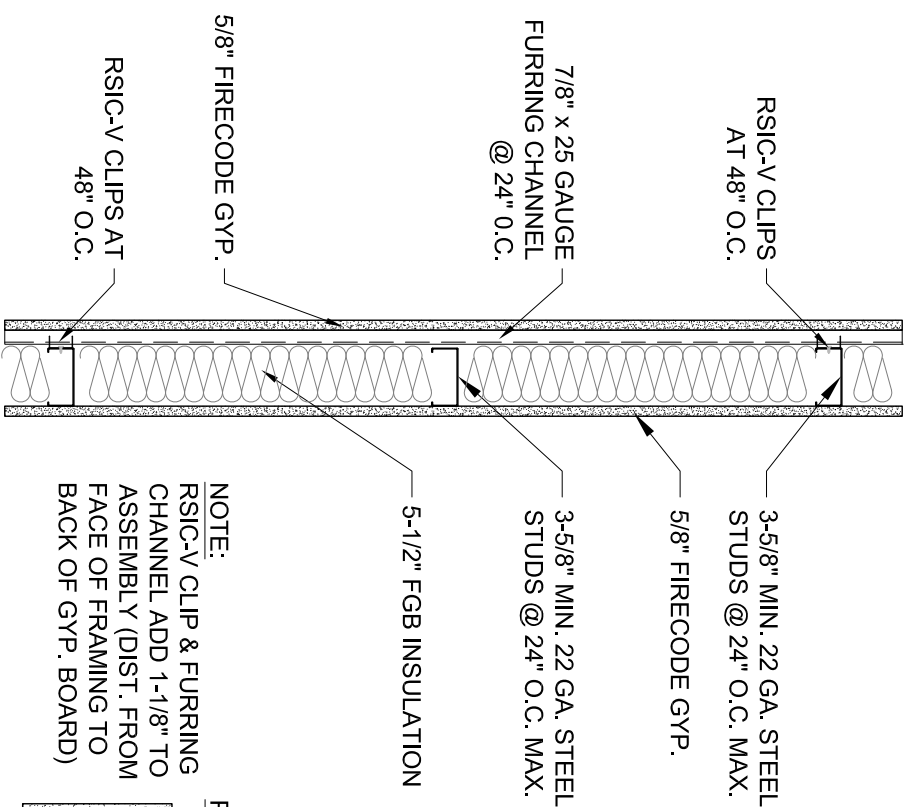


**ONE HOUR - STC 58**

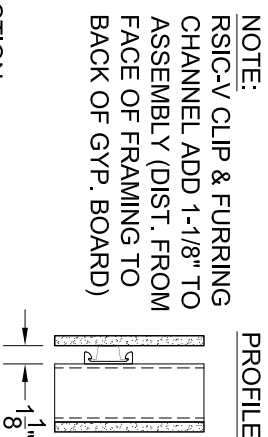


- ONE HOUR CONSTRUCTION**
- 5/8" FIRECODE GYP.
  - 7/8" x 25 GAUGE FURRING CHANNEL @ 24" O.C.
  - RSIC-V CLIPS @ 24" x 48" oc
  - 3-5/8" MIN. 22 GA. STEEL STUDS @ 16" oc MAX.
  - 5-1/2" FGB INSULATION
  - 5/8" FIRECODE GYP.

**ONE HOUR - STC 58**



- ONE HOUR CONSTRUCTION**
- 5/8" FIRECODE GYP.
  - 7/8" x 25 GAUGE FURRING CHANNEL @ 24" O.C.
  - RSIC-V CLIPS @ 24" x 48" oc
  - 3-5/8" MIN. 22 GA. STEEL STUDS @ 24" oc MAX.
  - 5-1/2" FGB INSULATION
  - 5/8" FIRECODE GYP.



**UL Fire Resistive Designs – 1 Hour - V489**



**PAC International, Inc.**  
 Phone: 866-774-2100 Web: www.pac-intl.com  
 © 2011 PAC International, Inc. • All Rights Reserved.  
 RSIC® is a registered Trademark of PAC International, Inc.

Last Revised:

4/21/2011

**1 Hour Fire Rated Steel Wall Detail - UL V489**  
 (See UL.com for additional detail)